

HD70X CORE DRILL RIGS

**Technical
Catalogue**





HD 70X



OUTER DIAMETER		DRILLING CAPACITY
PQ	114,00 MM	400 M
HQ	88,90 MM	750 M
NQ	69,90 MM	1000 M
BQ	55,60 MM	1500 M

HD 70X >> DRILL HEAD

Rotation Engine	Rexroth 107 cc or Parker 110 cc Axial Piston Variable Displacement Motor								
Transmission	4 Gears								
Jaw System	Spring or Nitrogen Piston								
Holding Capacity	20.000 kg								
Maximum Flow	1200 RPM								
Hydraulic Side Slip	30 cm								
Max. Coupling Diameter	117 mm								
Lubrication Tandem	Casappa (11 cc + 6 cc) 7,2 L / min. max. flow								
Ratios	<table> <tr> <td>1st</td> <td>6.27:1</td> </tr> <tr> <td>2nd</td> <td>3.12:1</td> </tr> <tr> <td>3rd</td> <td>1.75:1</td> </tr> <tr> <td>4th</td> <td>1.00:1</td> </tr> </table>	1st	6.27:1	2nd	3.12:1	3rd	1.75:1	4th	1.00:1
1st	6.27:1								
2nd	3.12:1								
3rd	1.75:1								
4th	1.00:1								

HD 70X >> TORQUE AND RPM RATINGS

* Hydraulic motor at maximum / minimum displacement.

	Speed (No Load)	Torque (Stall)	
	RPM	Nm	lbft
1st Gear	122 - 199	5322 - 3254	3,925 - 2,400
2nd Gear	246 - 400	2648 - 1620	1,963 - 1,195
3rd Gear	439 - 714	1486 - 908	1,096 - 670
4th Gear	769 - 1,200	849 - 519	626 - 383

HD 70X >> DRILL MAST AND FEED SYSTEM

Feed Stroke	3,80 m
Pull Cap. @ 280 bar	31.500 kg
Thrust Cap. @ 280 bar	17.500 kg
Rod Pull Capacity	3 or 6
Drilling Angle	45° - 90°
Telescopic Mast Length	3.5 m.



HD 70X >> HYDRAULIC SYSTEM

PRIMARY PUMP

Type Axial piston, variable displacement load sensing, pressure compensated with low pressure standby

Max. Flow 180 - 200 liter / min. (Diesel Engine 1600 - 1800 RPM)

Max. Working Pressure 280 - 350 bar

** According to customer demands and needs of the system, Kawasaki, Danfoss and Parker brand products can also be used.*

SECONDARY (2ND) PUMP

Type Axial piston, variable displacement load sensing, pressure compensated with low pressure standby

Max. Flow 96 - 108 liter / min. (Diesel Engine 1600 - 1800 RPM)

Max. Working Pressure 350 bar

** According to customer demands and needs of the system, Kawasaki, Danfoss and Parker brand products can also be used.*

THIRD (3RD) PUMP

Type Axial piston, pressure compensated

Max. Flow 45 - 50 liter / min.

Max. Working Pressure 280 bar

** According to customer demands and needs of the system, Kawasaki, Danfoss and Parker brand products can also be used.*

MIXER AND ROTATION LUBRICATION

Type Gear Pump

Max. Flow 35 liter / min.

Max. Working Pressure 280 bar

Rotation Lubr. Pumps Gear Pump

Max. Flow 15 liter / min.

Max. Working Pressure 280 bar

HD 70X >> PRIME MOVER

Brand Ford, Cummins or Volvo brand motors will be used

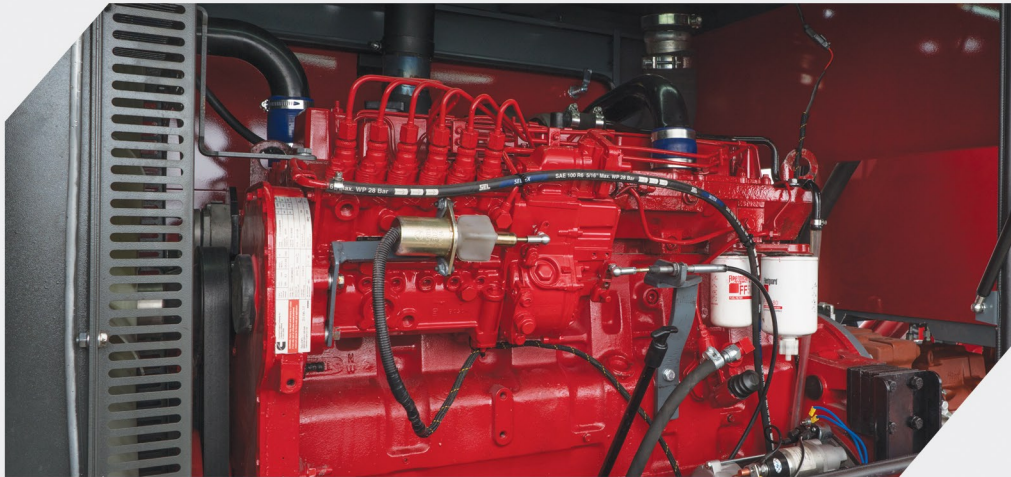
Maximum Power 280 - 380 hp (208 - 283 kw)

Maximum RPM 0 - 2200 RPM

Emission Class Will vary according to the selected motor model

Fuel Consumption Euro-3, Euro-5, Euro-6

** Will vary according to the selected model*



** A mechanical engine is used as a visual representation for the Prime Mover. For HD70 rigs both electronic and mechanical can be used.*



HD 70X >> MOVEMENT SYSTEM

Undercarriage Model	IVA Johann (Germany), Trackone (Italy), Strickland (UK)
Max. Dynamic Capacity	12 ton
Track Type	Double Speed
Control	Mechanical or Remote Control (Optional)
Speed	2,3 - 4,3 km / h
Gradeability	Max 30° - 225 Bar
Total Height	2790 mm
Total Length	650 mm
Total Width	400 mm

** Dimensions and speed can vary depending on the chosen track type.*





**HD 70X
CORE
DRILLING RIGS**

**Technical
Catalogue**

Hidroport Mühendislik Dış Ticaret Makina Mekatronik Elektrik Otomasyon A.Ş.

Address (Headquarters): Ostim OSB Mah., 1271. Cad. No: 38, 06374 Yenimahalle / Ankara

Tel.: +90 312 385 10 02

Fax: +90 312 385 20 03

www.hidroport.com

info@hidroport.com